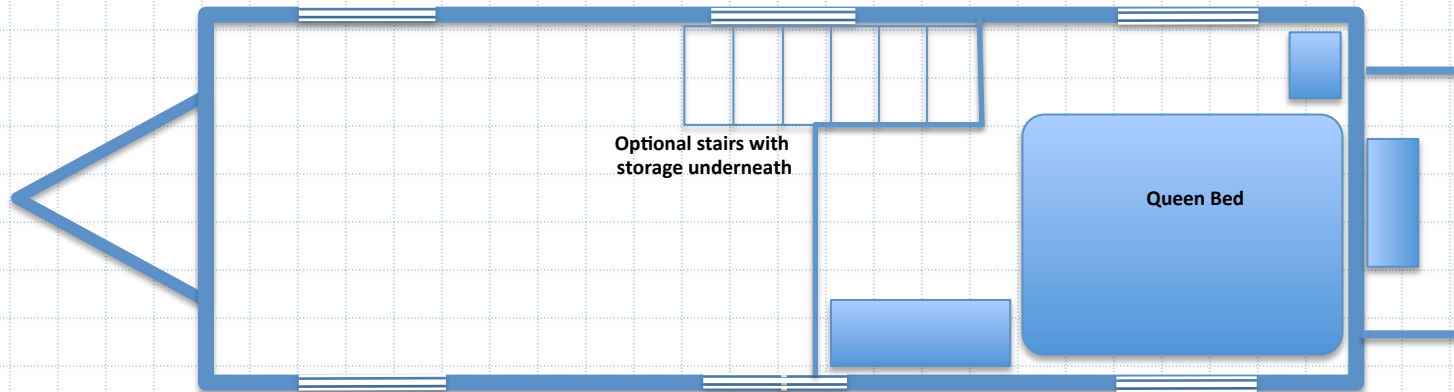


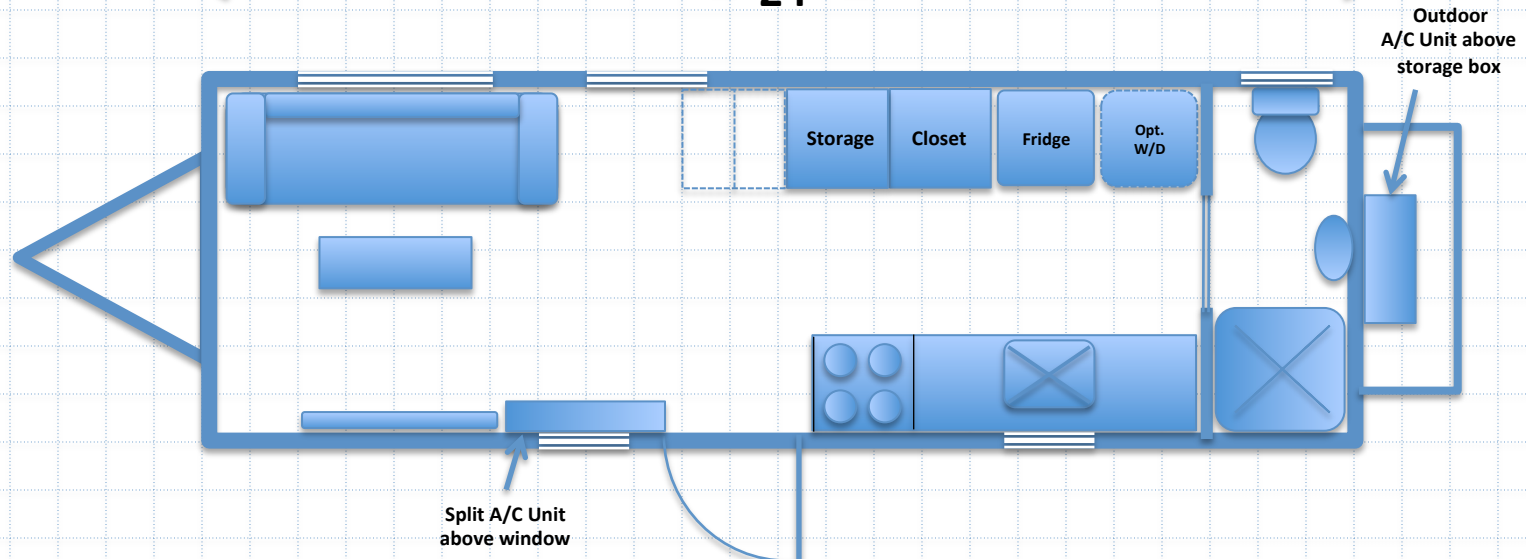
The Boxwood

Starting at \$42,500

Upper Level



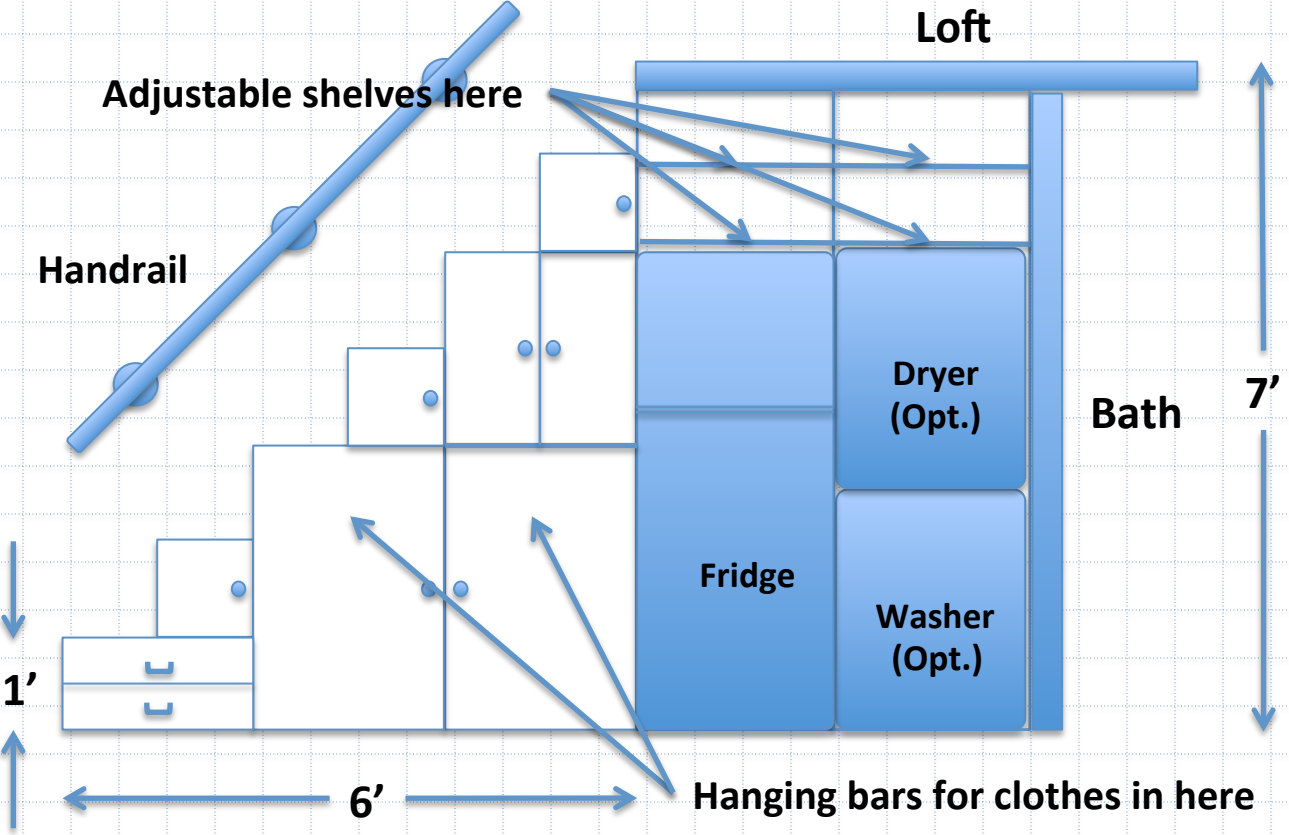
24'



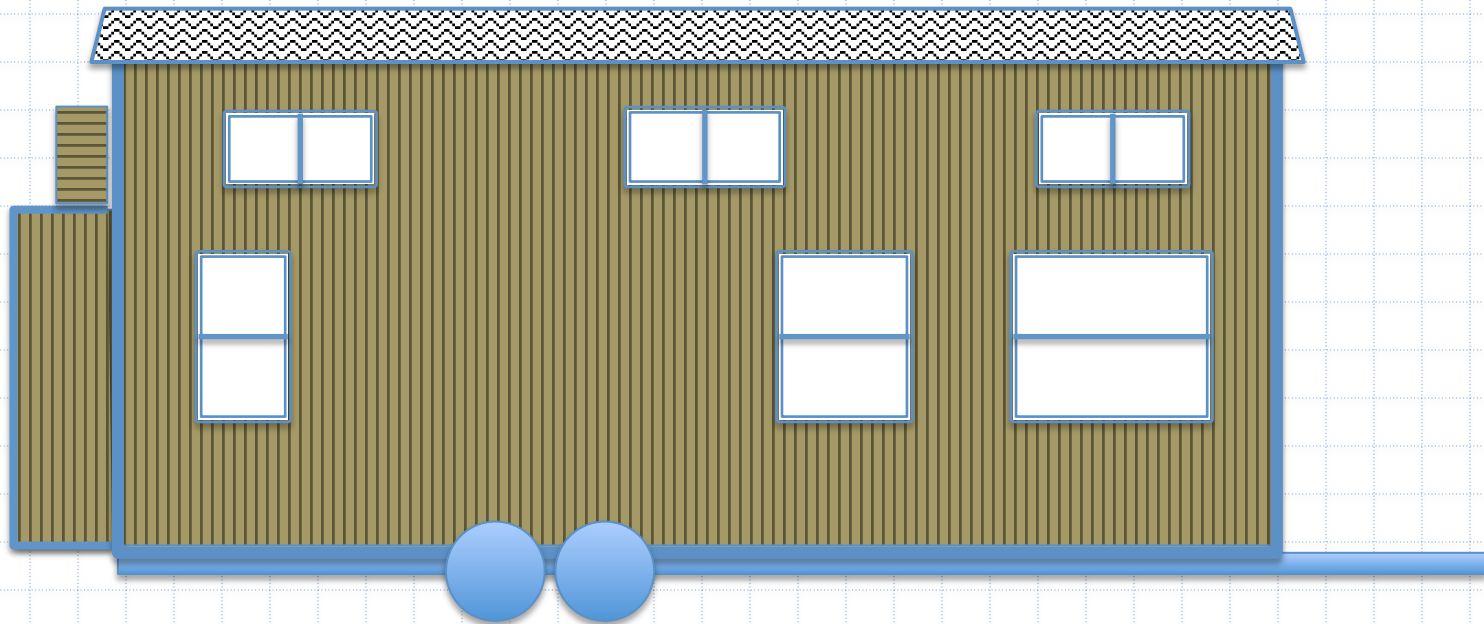
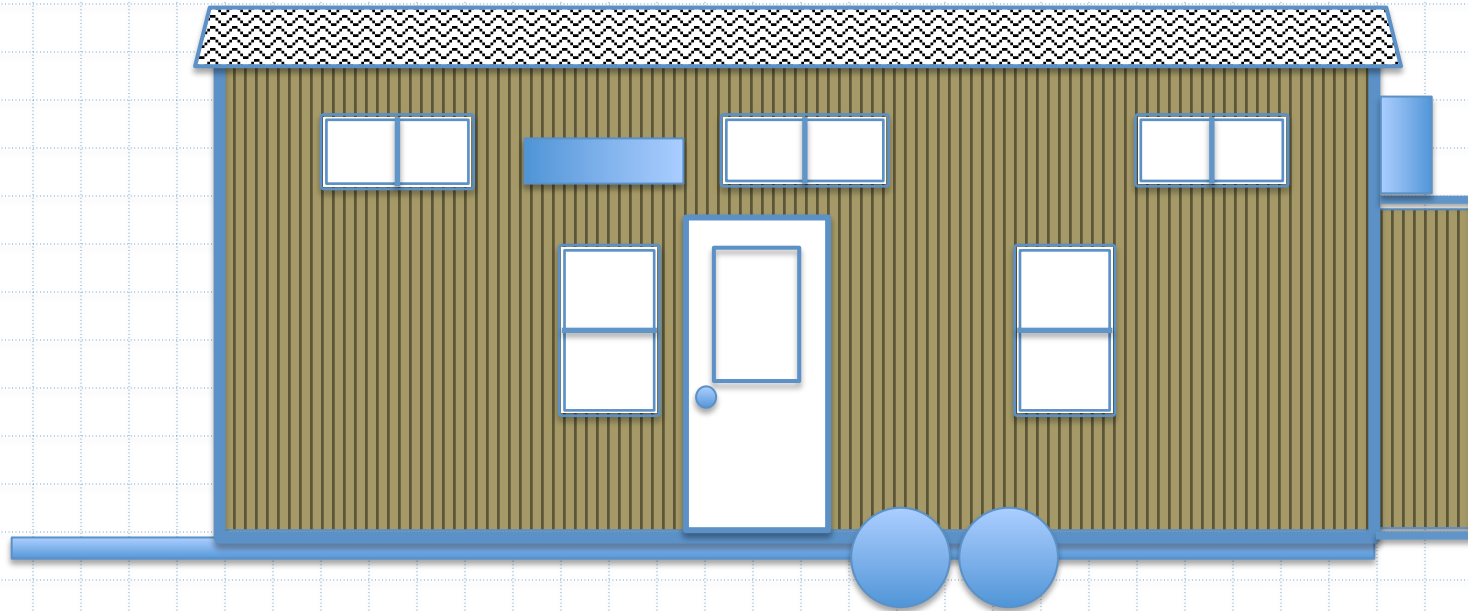
8.5'

Ground Level

Optional Storage Staircase 6' x 6'



Front View



Rear View

Options and Specifications

General

- Exterior – LP Smartside
- Metal roof, standard pitch
- Rear storage box (6' wide x 6' high x 2' deep)
- 36" front door, opening outwards
- Panel wall coverings
- Double-paned windows
- Vinyl flooring throughout ground floor
- 50A service
- Fiberglass insulation

Appliances

- Apartment-size refrigerator (2'x2'x5' stainless)
- Electric range/oven (4-burner, 24" wide)
- Mini-split A/C & heat pump unit
- Electric 20-gallon water heater – inside rear storage box
- Plumbing for washer/dryer
- Optional furniture: Full-size or queen-size bed; nightstand(s); chest of drawers; hanging wardrobe

Kitchen

- Laminate countertops
- Standard stainless sink
- Cabinets above countertops
- Microwave above cooktop

Living area

- Compact staircase/ladder for access to loft

Bathroom (3' interior width)

- Regular flush toilet
- Small wall-mounted sink
- Medicine cabinet with mirror & light above sink
- Standard shower with curtain
- Frosted glass window above toilet
- Pocket door entrance

Loft bedroom

- Vinyl flooring
- Optional furniture: full or queen mattress; nightstand; chest of drawers

Options/Upgrades

- 40 gallon fresh water, grey water, and black water storage tanks
- Pine interior walls
- Staircase leading up to loft with built-in storage (see diagram)
- Washer/dryer (stackable or combo unit)
- Propane range/oven
- Propane on-demand water heater
- Furniture: couch; table; TV wall mount
- Silestone or granite countertops
- Undermount or farmer's sink
- Composting toilet
- Glass shower door
- Barn-style sliding door for bathroom
- Carpet in loft area
- Laminate or luxury vinyl plank flooring
- Closed-cell spray foam insulation